

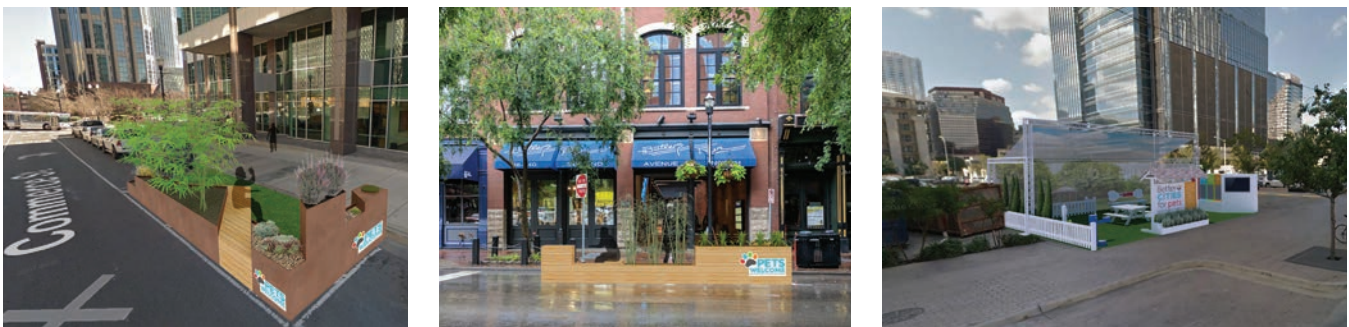
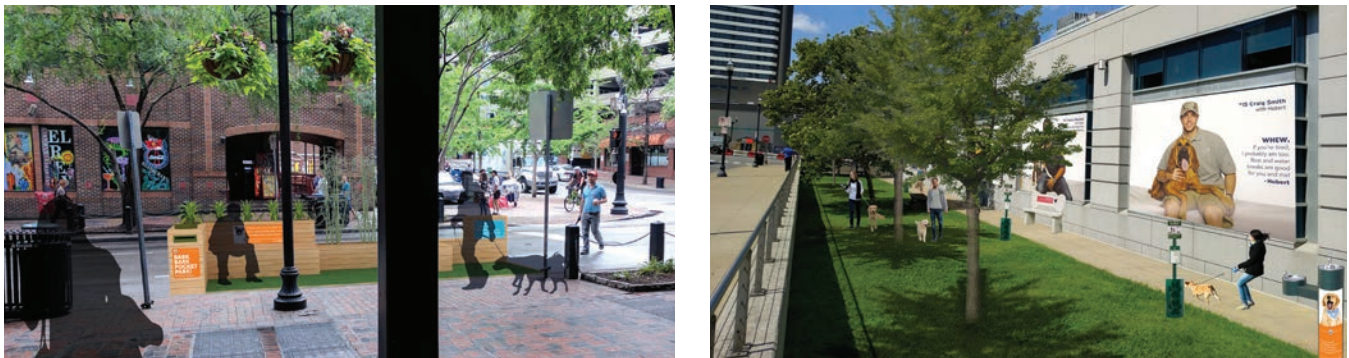
A PLAYBOOK FOR PET-FRIENDLY CITIES RESOURCE



SMALL URBAN PARKS AND PARKLET DESIGN IDEAS

The difficulty of having a pet in an urban location is often finding convenient and appropriate spaces for the pets. A parklet is a small extension from sidewalks that increase space for people and other uses. Parklets can be temporary or permanent, and are typically built in parking lanes of street, occupying one or two parking spaces, or unused parts of the street. This extra space can be used to create small pet-friendly areas in dense urban zones where large pet parks are not feasible. The following are designs that convert small urban spaces into pet-friendly stops. A few key factors to include in a parklet or small park are:

- Protection from traffic
- Seating
- Drainage plan
- Shade for pets and people
- Waste stations for owners to pick up after dogs
- Hydration for people and pets



Renderings: Nashville Civic Design Center