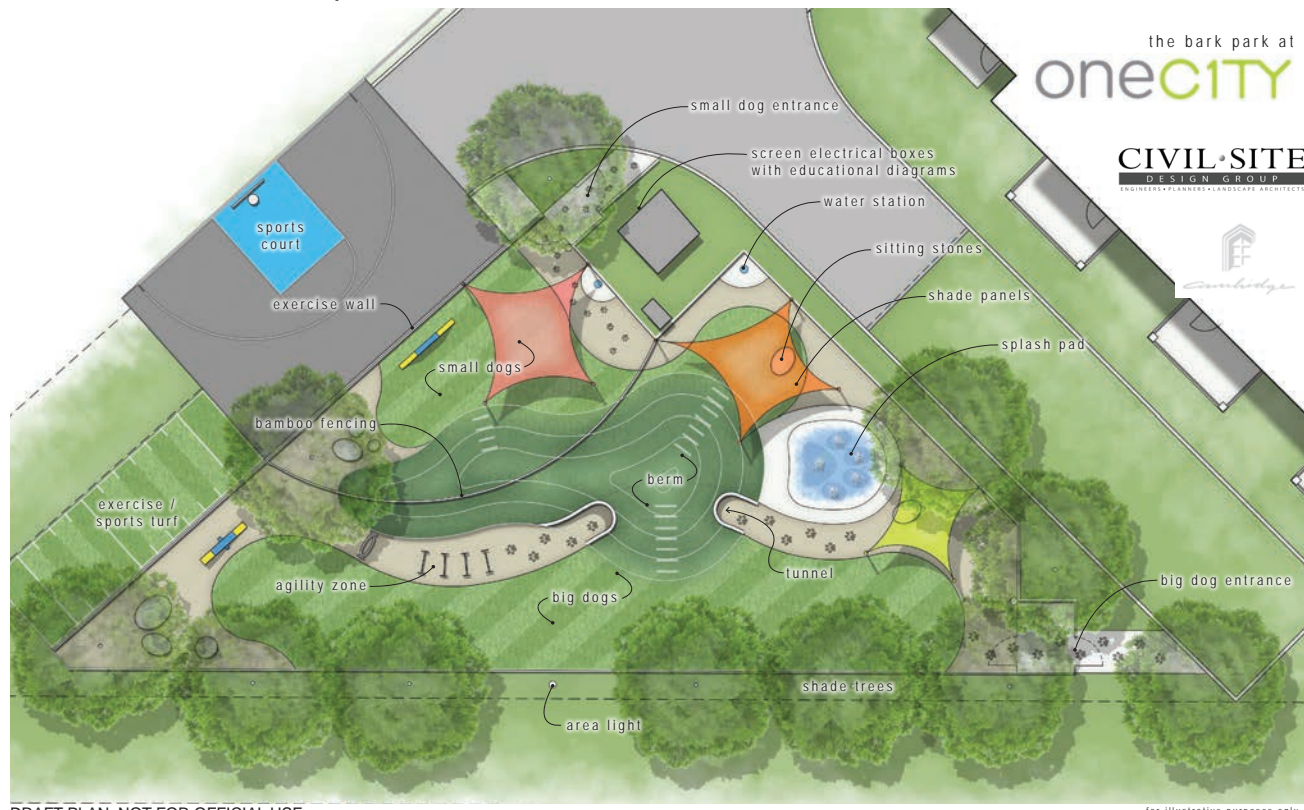




## Sample Designs for Parks & Parklets

### PARK DESIGN IDEAS

When pets have a place to run and play, it can help keep them healthy, reduce anxiety or boredom, improve social skills with other dogs and stimulate their minds. If you plan to add or enhance a dog park in your community, be sure to consider these key features to make the most of the space:



DRAFT PLAN: NOT FOR OFFICIAL USE

for illustrative purposes only

- Clear signage about rules and expectations for use of the park
- One or more acre of space for dogs to run and play
- Four- to six-foot fencing around the park
- Double gate system to keep pets safe as they go in and out of the park off-leash
- Separate large and small dog areas
- Hydration station(s) for dogs
- Waste station for owners to pick up after dogs
- A suitable surface for running dogs
- Shade for both dogs and owners
- Exercise equipment and obstacles for dogs to climb
- Water feature for dogs to play in
- Benches or seating for dog owners

Pets make life better in countless ways. Yet in many places, there are barriers that make it hard to enjoy life with a pet. Let's make cities pet friendly, so everybody benefits.

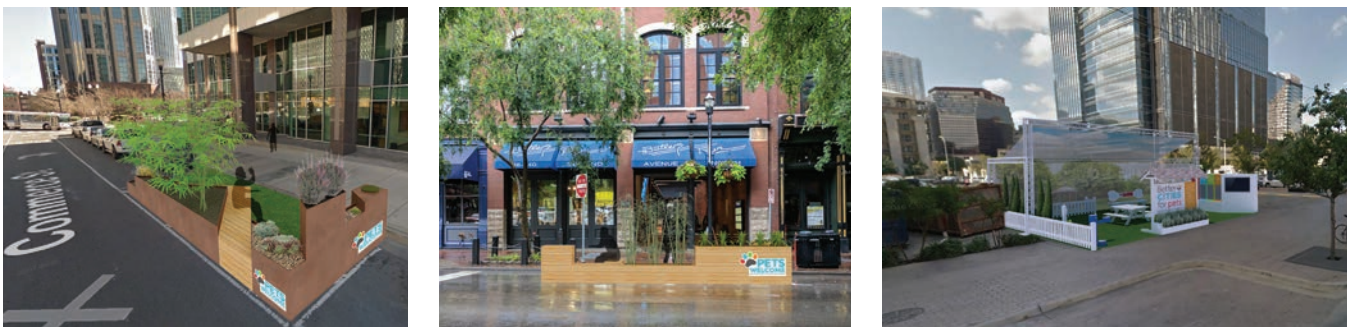
Join the movement and get A Playbook for Pet-Friendly Cities: [BetterCitiesForPets.com](http://BetterCitiesForPets.com)



## SMALL URBAN PARKS AND PARKLET DESIGN IDEAS

The difficulty of having a pet in an urban location is often finding convenient and appropriate spaces for the pets. A parklet is a small extension from sidewalks that increase space for people and other uses. Parklets can be temporary or permanent, and are typically built in parking lanes of street, occupying one or two parking spaces, or unused parts of the street. This extra space can be used to create small pet-friendly areas in dense urban zones where large pet parks are not feasible. The following are designs that convert small urban spaces into pet-friendly stops. A few key factors to include in a parklet or small park are:

- Protection from traffic
- Seating
- Drainage plan
- Shade for pets and people
- Waste stations for owners to pick up after dogs
- Hydration for people and pets



Renderings: Nashville Civic Design Center